

BULKHEAD LINE MAP

SECTION 17, TWP. 38 S, RGE. 42 E

START AT THE NORTHEAST CORNER OF SECTION 17, TOWNSHIP 38 SOUTH, RANGE 42 EAST, MARTIN COUNTY, FLORIDA; THENCE RUN $S14^{\circ}01'19''$ W A DISTANCE OF 2637.30 FEET TO THE POINT OF BEGINNING; THENCE RUN $N88^{\circ}57'W$, PARALLEL TO THE NORTH LINE OF SAID SECTION 17, A DISTANCE OF 1950 FEET TO THE POINT OF TANGENCY WITH A CURVE, CONCAVE TO THE NORTHEAST AND WITH A RADIUS OF 1520 FEET; THENCE RUN ALONG THE ARC OF SAID CURVE A DISTANCE 2400 FEET, MORE OR LESS, TO AN INTERSECTION WITH THE LINE OF MEAN HIGH WATER OF THE EXISTING SHORE LINE; THENCE RUN NORTHERLY, ALONG SAID LINE OF MEAN HIGH WATER A DISTANCE OF 1050 FEET, MORE OR LESS, TO THE NORTH LINE OF SAID SECTION 17.

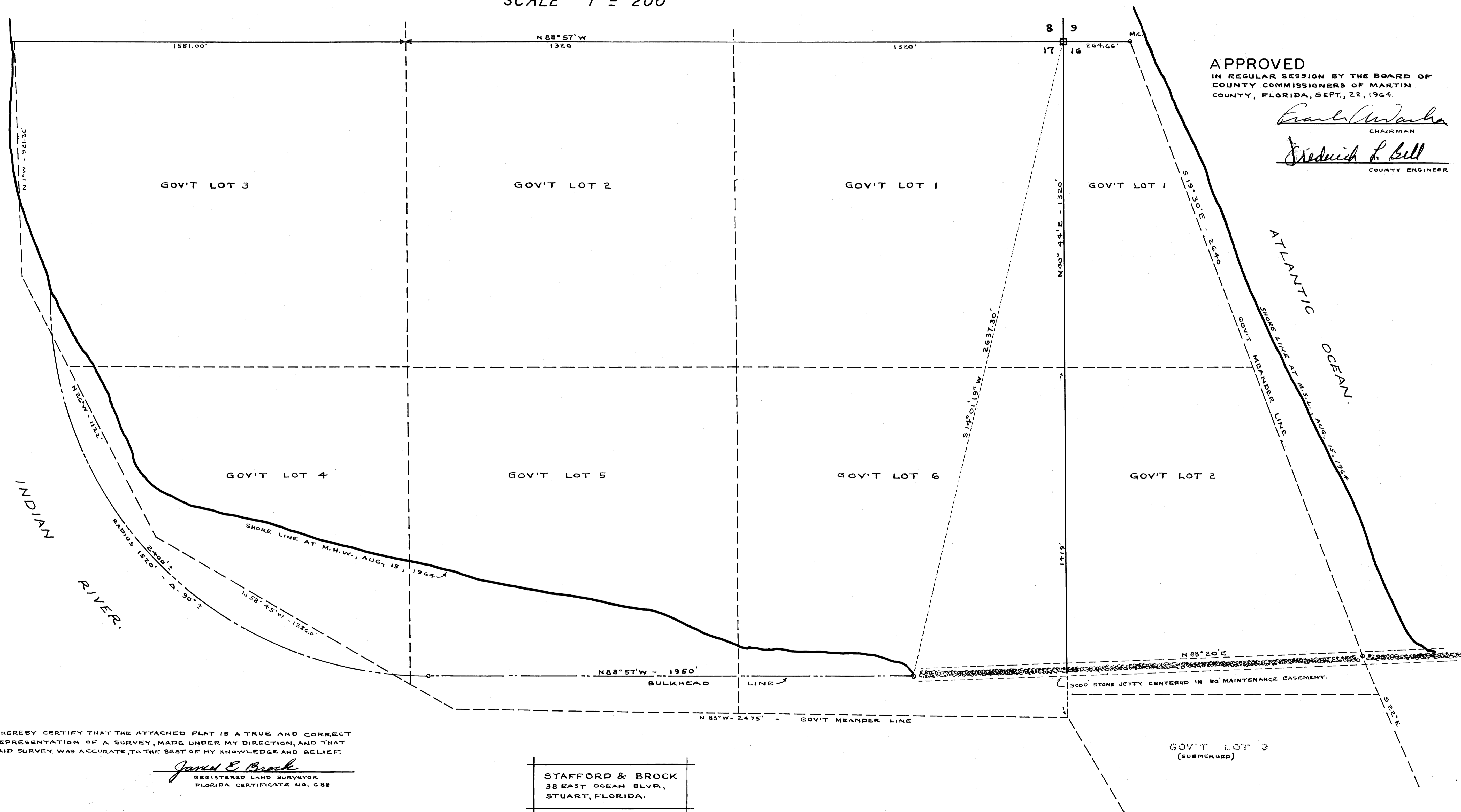
I hereby certify that I have examined the attached map and find that it complies in form with Chapter 177, Florida Statutes, and was filed for record in Plat Book 4, Page 38, this 14th day of Dec., 1964, in the Office of the Clerk of the Circuit Court, Stuart, Martin County, Florida.

CLERK OF THE CIRCUIT COURT
Dorothy Pierce
FILE NO. 104574

MARTIN COUNTY, FLORIDA.

SCALE 1" = 200'

NORTH



APPROVED
IN REGULAR SESSION BY THE BOARD OF
COUNTY COMMISSIONERS OF MARTIN
COUNTY, FLORIDA, SEPT. 22, 1964.

Frank W. ...
CHAIRMAN

Fredrick L. Bill
COUNTY ENGINEER

I HEREBY CERTIFY THAT THE ATTACHED PLAT IS A TRUE AND CORRECT REPRESENTATION OF A SURVEY, MADE UNDER MY DIRECTION, AND THAT SAID SURVEY WAS ACCURATE, TO THE BEST OF MY KNOWLEDGE AND BELIEF.

James E. Brock
REGISTERED LAND SURVEYOR
FLORIDA CERTIFICATE NO. 682

STAFFORD & BROCK
38 EAST OCEAN BLVD.,
STUART, FLORIDA.

GOV'T LOT 3
(SUBMERGED)

ST. LUCIE INLET